



Scope of the Study

- A baseline assessment of Thurrock's current climate impact (emissions) and risks (hazards)
- Synthesise existing legislation, policy etc
- Review existing corporate documents, local planning processes, policy and operations...
- Outline initiatives to focus on in the Local Plan
- Define what the requirements should be if a climate change strategy were to be developed for the borough.

Page 2





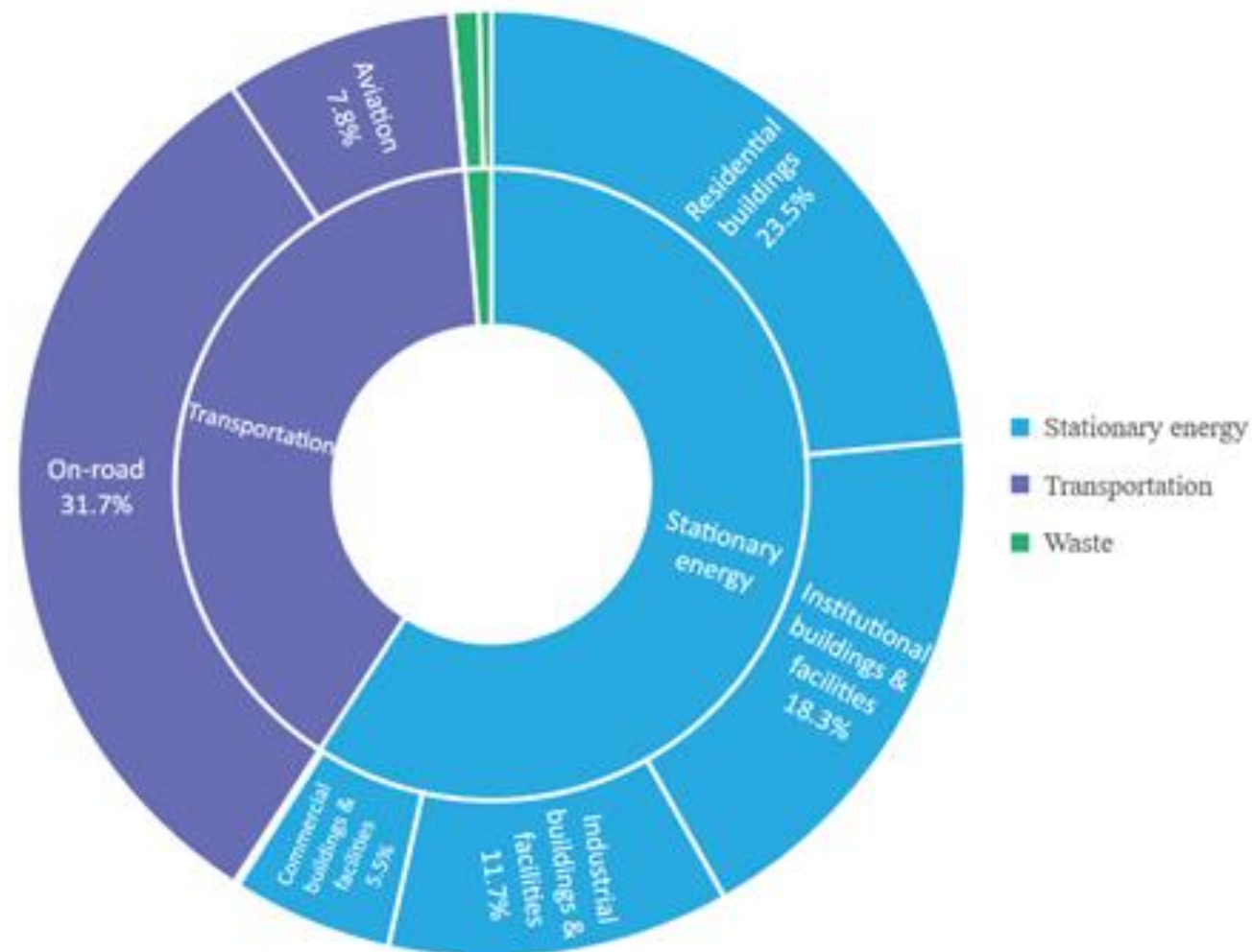
GHG emissions

- Total 2018 emissions, were 1,623,945 CO₂e – 98.6% from stationary energy and transport.
- Of Transport emissions 80% from On-Road transportation.

Page 3

Significant road transport networks within the borough, such as the M25 Dartford Crossing and the A13, in addition to commercial traffic generated by the port and logistics industries in the area.

- Emissions have fallen overall since 2005, due to the fall in industrial emissions



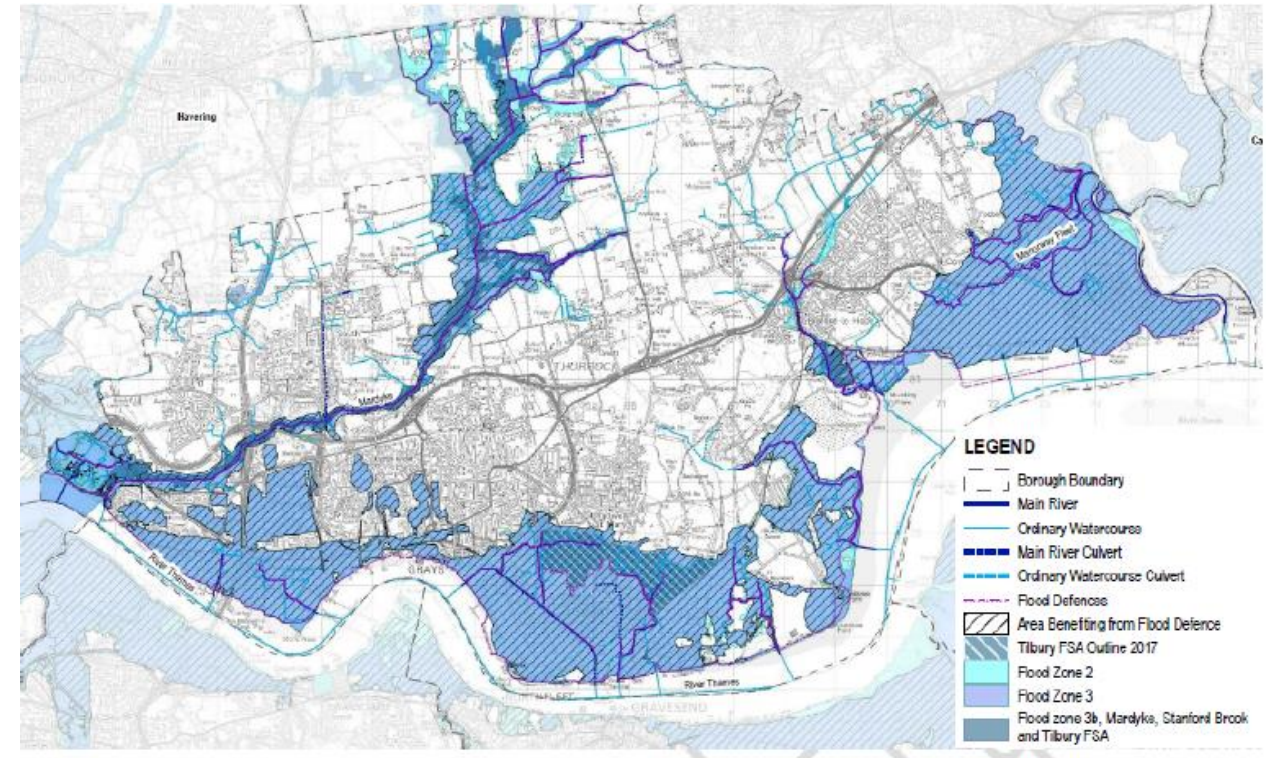
....Opportunities around Corporate emissions too.



Climate risks

- Climate Risks and Hazards
 - Flooding
 - Extreme weather
 - Hotter summers
- Approx. 11,000 properties at risk;
- Areas of Tilbury, Purfleet and West Thurrock;
- Commercial and industrial assets – e.g. Port of Tilbury and DP World London Gateway ports, Lakeside Retail Park; and
- Transport assets – e.g. c2c mainline, A13, Thames crossing.

Page 4





Examining strategies and policies – Key policy areas

GHG emissions

- Energy
- Transport and Infrastructure
- Green Infrastructure
- Sustainable Development
- Design
- Housing
- Economy
- Waste

Climate Risk

- Flood
- Green infrastructure
- Housing
- Sustainable Development
- Design
- Economy

Page 5

See Appendix B in the Arup report

Policy relating to emissions

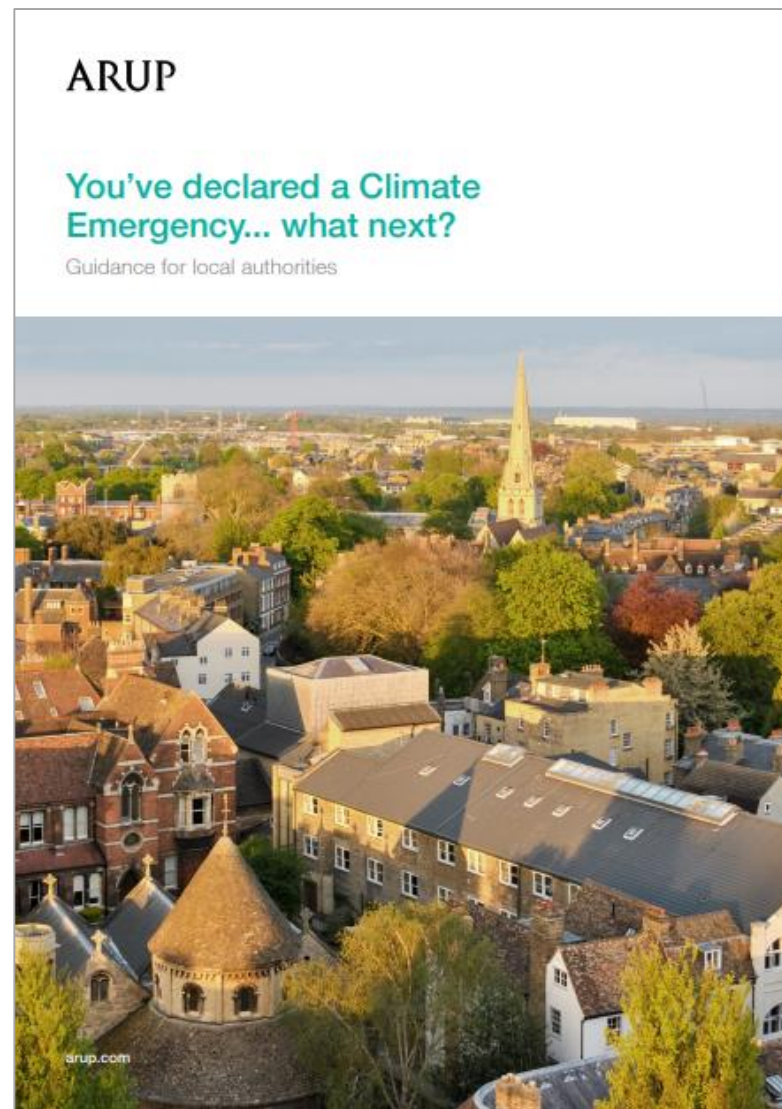
Key Policy Area	Scale	Title	Year	Policy / Action / Plan	Implications for GHG Emissions	Comments	Priority for Thurrock
Energy	Local	Thurrock Council Core Strategy	2015	The Council will encourage opportunities to generate energy from non-fossil fuel and low-carbon sources. It will promote the delivery of renewable and low-carbon energy developments utilising technology such as solar panels, biomass heating, small-scale wind turbines, and other methods.	Net decrease in energy-related emissions over time.	Any future climate strategy should include some practical actions for "promoting the delivering of..."	
Energy	Local	Thurrock Council Core Strategy	2015	The Council will require new development to be carbon neutral. All viable energy efficiency measures and renewable or low-carbon technology opportunities must be utilised; any net increases must be offset by contributing to a potential Thurrock Carbon Offset Fund.	No net change in emissions.	Note that this policy applies only to new development. A strong policy that needs to be enacted in order to meet emissions targets. The Carbon Offset Fund has not yet been implemented. This should be a priority.	



Main recommendations

- Identify key stakeholders and involve them early
- Strategy should reflect understanding of emissions sources and probable climate risks, and be designed to respond to monitored performance over time
- Demonstrate how strategy is designed to respond to national and regional policy *and* can achieve local objectives beyond climate change mitigation and adaptation
- Highlight the routes to action for each measure in the strategy and mechanisms for overcoming barriers
- Establish clear timescales and accountability

Page 6





Suggested focus areas

- Focus areas:
 - Integrating land-use and transport
 - Buildings
 - Retail and Industry
 - Infrastructure
 - Environment and natural resources
 - Waste

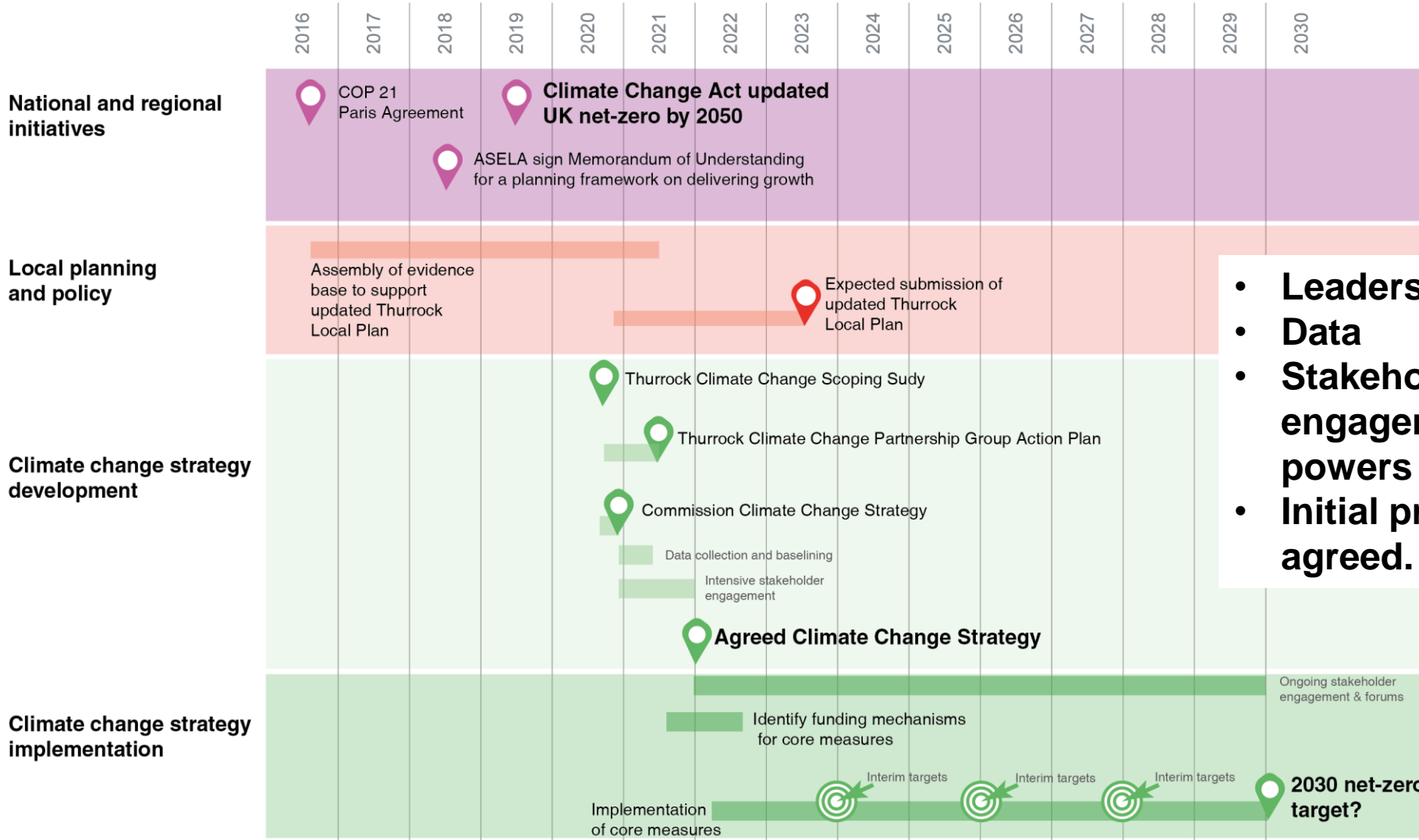
Page 7





Route Map to Climate Action

Page 8



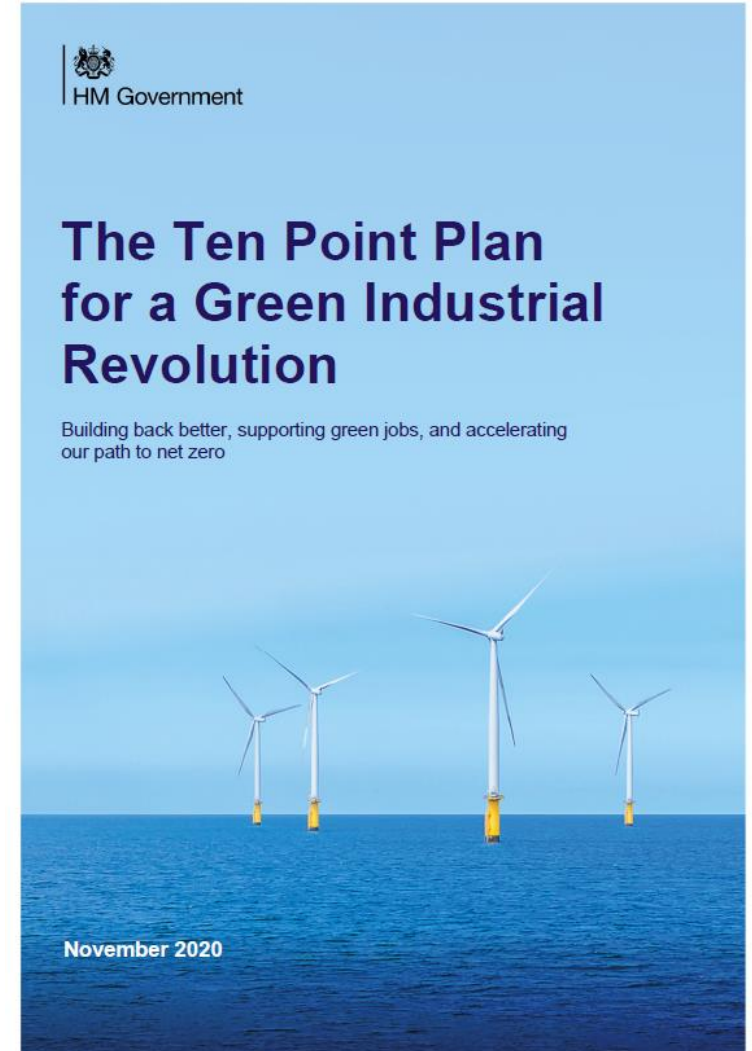
- Leadership buy-in
- Data
- Stakeholder engagement and powers analysis
- Initial programme agreed.



What's changed since April 2020? Some new reference sources.

- Local Authorities and the 6th Carbon Budget:
<https://www.theccc.org.uk/publication/local-authorities-and-the-sixth-carbon-budget/>
- Updates on National Policy:
<https://townsfund.org.uk/resources-collection/national-strategic-brief-climate-change>
- New report on Climate Adaptation in Schools (GLA):
https://www.london.gov.uk/sites/default/files/gla_schools_adaptation_guidance_14-10-20_issue.pdf

Page 9





Making links

- Area wide Energy Strategy, Arup proposal submitted.

Page 10 Hydrogen in the area...Thames Estuary Hydrogen Group / Project Cavendish.

